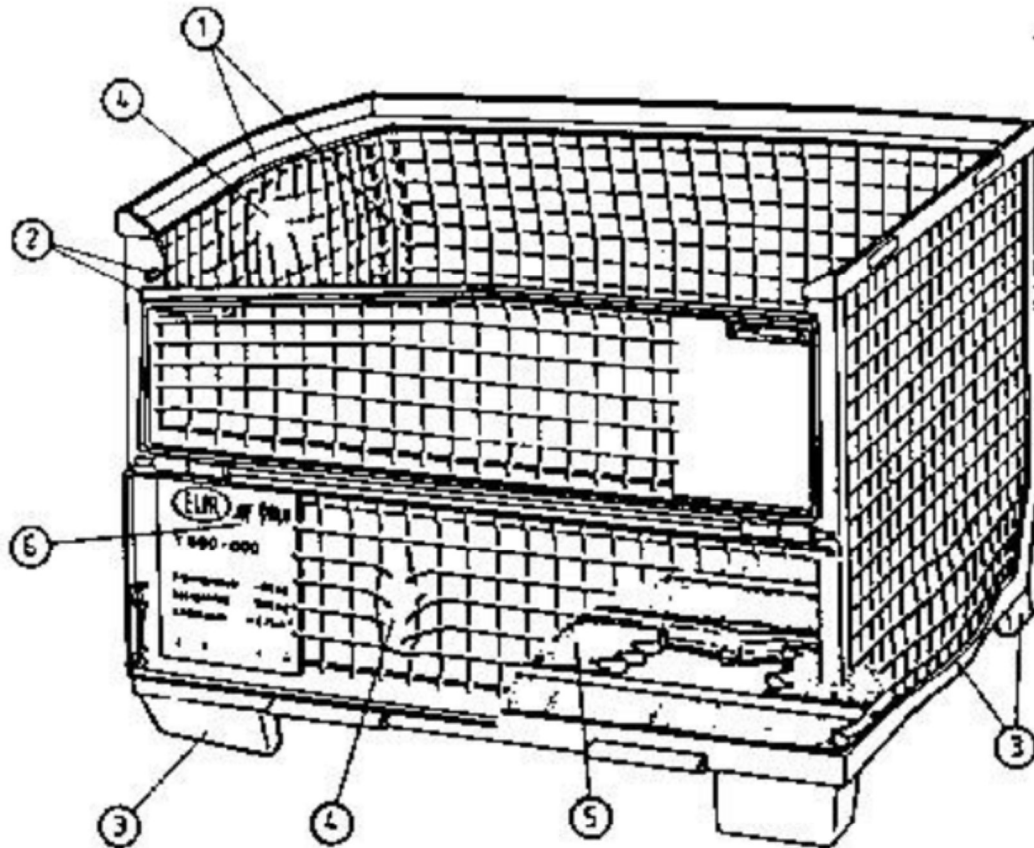


Exchange criteria for used UIC standardized EUROPEAN WIRE MESH BOXES

In case one of the following conditions is met, the Euro-box is considered nonexchangeable, and must be repaired or taken out of service:



1st Twisting of collar or corner column/s

Significant visible deformations to the collar or at the corner pillars alter the standardized dimensions and diminish the stacking quality. The danger of an accident is present. The Euro-box is non-exchangeable if deformations (bulges)



Exchangeable



Non-exchangeable

2nd The front flaps are immobilized or deformed in such manner that they can no longer be closed

The front flaps facilitate loading and unloading. Defective, missing, or rusty closures, as well as bent flaps, which cannot be opened or locked, render the Euro-box non-exchangeable. If all positive criteria are met, but a cable tie is attached to the flaps, this box pallet is considered exchangeable. **Are all main criteria ok and you use a cable tie to secure the flap during the loading process then the Gitterbox is exchangeable..**



Exchangeable: Cable tie is serving the additional securing



Non-exchangeable: Wire for for securing

3rd Floor frames or feet are bent in such manner that the Euro-box no longer sits equally on four feet, or no longer is safely stackable

Deformations (protrusions) of the bottom frame and feet over 1 cm towards the exterior or 2 cm towards the interior render the Euro-box non-exchangeable. This is also applicable, if one foot is more than 2 cm removed from the level bottom when the remaining three are touching the bottom. This is an overturning danger, rendering the Euro-box non-exchangeable.



Exchangeable



Non-exchangeable

4th Grid is torn in such manner the wire ends protrude inwards or outwards (one missing strand per side allowable)

A mesh is the connecting wire between two welding points. Due to the danger of injury, single wires may not protrude inwards or outwards. In case more than two mesh per side are missing, and/or more than two wires per side are torn, and/or separated from the frame or the corner column, the pallet is nonexchangeable.



Exchangeable



Non-exchangeable

5th One board is broken or missing

In case one board is broken in its entire width or length, the Euro-box is considered non-exchangeable. A board broken up to a maximum of 50% is allowed. In case a board or part of a board is missing, bearing capacity and thus safety is compromised, the box is non-exchangeable. Bottom boards may not be painted or soiled in such manner that their status no longer is discernible. Rotten boards reduce the bearing capacity and thus the safety, rendering the Euro-box unusable.



Exchangeable



Non-exchangeable

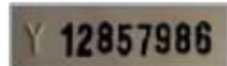
6th Essential markings (pursuant to attachment 4) are missing or illegible



In case one of the marking is missing or illegible, the Euro-box is rendered nonexchangeable



The upper third of the data plate includes the embossed characters EUR (in the oval) or DB (in the emblem). For Euro-box manufactured in the areas of authority of differing Railroad Company Authorities, different rail symbols are applicable (see attachment).



A seven or eight digit Y-number stenciled in black paint. The letter Y must be embossed.

During the repair work, faded Y numbers must be renewed in black color (stenciled). Each Y number is assigned only once by EPAL. For repair works, EPAL assigns special number areas in order to better recognize counterfeit products or repairs not performed by specialists. The label plate of older boxes (until 1995) is black, and the Y numbers stenciled in white paint.



If one or two digits are cloudy then it is still acceptable.



New Euro-box / old test seal



New Euro-box / new test seal

Next to the Y number is an indentation where the counterfeit-proof EPAL test seal is attached following a successful test.



Boxes up to 1995 are provided with a silver quality test seal. The seal is not labeled EPAL (*in the oval*), but includes the lettering RAL-RG 993 in the center, among others.

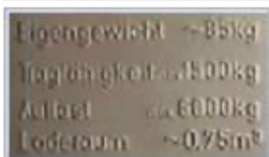


Repaired Euro-box / old seal



Repaired Euro-box / new seal

As sign of a proper repair, the indentation holds a green or blue EPAL seal instead of the silver or gold EPAL seal, including the permit number of the person performing the repair.



Underneath, the following embossed labels are found:

Tare weight about 70 Kg / 85 kg / max. load capacity 1500 kg

Max. load bearing capacity 6,000 kg loading space about 0.75 m

The load bearing limit of older boxes (up to 1995) only totals 900 kg max.

7th General status impaired by rust and soiling in such manner that goods no longer can be loaded, or might become soiled.

In case rust covers the grid of the Euro-box by more than 50%, the box is rendered non-exchangeable. Goods for loading might be soiled. A pallet is considered soiled in case it is not broom swept clean, or is emitting odors.



Exchangeable



**Non-exchangeable:
Euro-box covered with excessive rust
or dirty**

Attachment 1
European pool for Euro-box

List of member railroad companies				
Railways	Country	Membership date	Branding on left outside blocks	Validation (Year of manufacture available)
CFL	Luxembourg	11/01/68	CFL	2002
DB	Germany	11/01/68		
SNCB/B	Belgium	11/01/68		2002
NS	Netherlands	11/01/69 / 01/01/73		2005
BB	Austria	01/01/80		
HZ	Croatia	09/01/92		
SZ	Slovenia	09/01/92		
DR	Germany			1995
DSB	Denmark			1997
EPAL	European Pallet Association reg. Assoc.			

Original: overview over all seals



Seal new box
until 2007



Seal repaired box
until 2007



Seal new box
2007-2013



Seal repaired box
2007-2013



Seal new box
from 2013



Seal repaired box
from 2013

Fake :

If you detect a Faked Seal, you must claim this or return to a certificated service provider



Specifications:

- length: 1.200 mm
- width: 800 mm
- high: 970 mm
- weight from production year 2011: 70 kg, before 85 kg
- capacity from production year 1990: 1.500 kg
- extra load: 6.000 kg
- production after: UIC - Norm 435-3

**Original:**

until Juli 2013



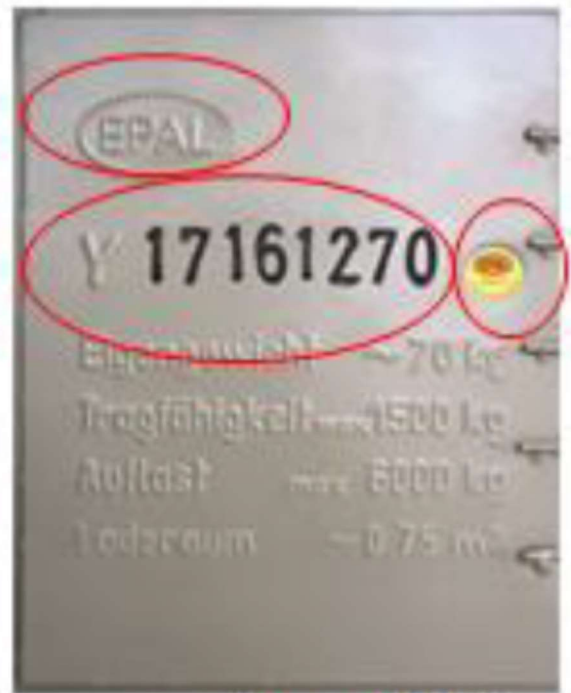
from August 2013

Fake:





bis July 2013



von August 2013

3 main specifications

- EUR or DB or EPAL Stamp
- Seal
- Y - Number



If 1 or 2 digits are cloudy
then it is acceptable